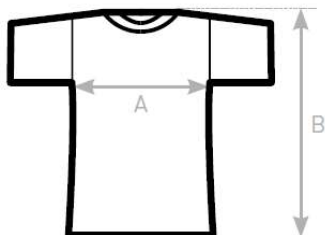


## Tabel mărimi tricouri B&C pentru Femei

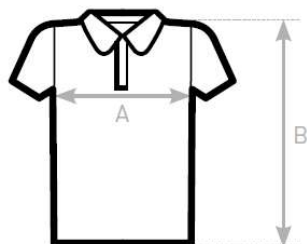
### Tricou simplu (la baza gâtului)



#### SIZES [CM]

B&C #E150 /WOMEN TW 02T	XS	S	M	L	XL	2XL	3XL
A HALF CHEST	41	44	47	50	53	56	59
B BODY LENGTH FROM NECK POINT	58	60	62	64	66	68	70

### Tricou polo (cu guler)



#### SIZES [CM]

B&C ID.001 /WOMEN PW111	XS	S	M	L	XL	2XL	3XL
A HALF CHEST	41	44	47	50	53	56	59
B BODY LENGTH FROM NECK POINT	61	62,5	64	65,5	67	68,5	70